

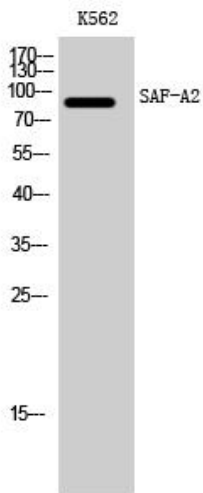


SAF-A2 Polyclonal Antibody

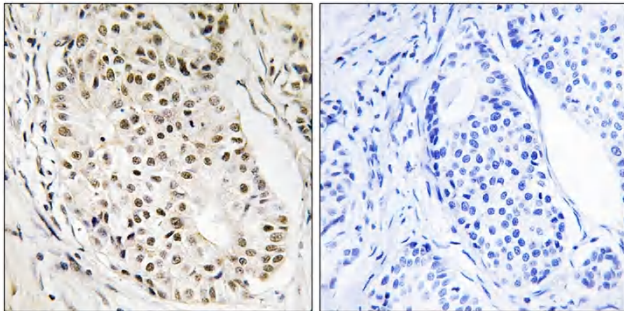
Catalog No	YP-Ab-02001
Isotype	IgG
Reactivity	Human;Mouse
Applications	WB;IHC;IF;ELISA
Gene Name	HNRNPUL2
Protein Name	Heterogeneous nuclear ribonucleoprotein U-like protein 2
Immunogen	The antiserum was produced against synthesized peptide derived from human HNRNPUL2. AA range:601-650
Specificity	SAF-A2 Polyclonal Antibody detects endogenous levels of SAF-A2 protein.
Formulation	Liquid in PBS containing 50% glycerol, 0.5% BSA and 0.02% sodium azide.
Source	Polyclonal, Rabbit,IgG
Purification	The antibody was affinity-purified from rabbit antiserum by affinity-chromatography using epitope-specific immunogen.
Dilution	WB: 1/500 - 1/2000. IHC: 1/100 - 1/300. ELISA: 1/40000.. IF 1:50-200
Concentration	1 mg/ml
Purity	≥90%
Storage Stability	-20°C/1 year
Synonyms	HNRNPUL2; HNRPUL2; Heterogeneous nuclear ribonucleoprotein U-like protein 2; Scaffold-attachment factor A2; SAF-A2
Observed Band	85kD
Cell Pathway	Nucleus .
Tissue Specificity	Epithelium,Liver,Melanoma,Ovarian carcinoma,
Function	similarity:Contains 1 B30.2/SPRY domain.,similarity:Contains 1 SAP domain.,subunit:Binds to MLF1 and retains it in the nucleus.,
Background	similarity:Contains 1 B30.2/SPRY domain.,similarity:Contains 1 SAP domain.,subunit:Binds to MLF1 and retains it in the nucleus.,
matters needing attention	Avoid repeated freezing and thawing!
Usage suggestions	This product can be used in immunological reaction related experiments. For more information, please consult technical personnel.



Products Images



Western Blot analysis of K562 cells using SAF-A2 Polyclonal Antibody cells nucleus extracted by Minute TM Cytoplasmic and Nuclear Fractionation kit (SC-003, Inventbiotech, MN, USA).



Immunohistochemistry analysis of paraffin-embedded human breast carcinoma tissue, using HNRNPUL2 Antibody. The picture on the right is blocked with the synthesized peptide.